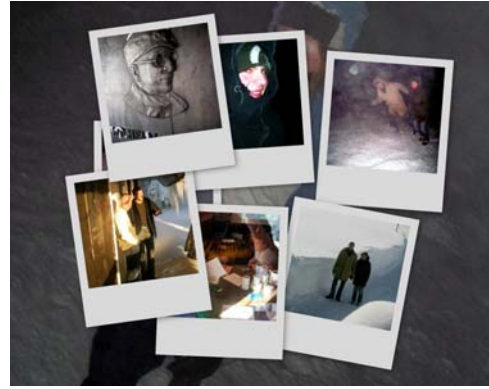




plantcode



# Black Forest Retreat

December 12<sup>th</sup>-14<sup>th</sup> 2008

Opelhaus, Feldberg

## Sequence evolution and analysis

### Topics:

substitution / mutation data matrices	PAM: Dayhoff et al. (1978), BLOSUM: Henikoff & Henikoff (1992)
pairwise alignment	global: Needleman & Wunsch (1970), local: Smith & Waterman (1981a/b)
homology searching	BLAST: Altschul et al. (1990) & (1997)
multiple alignment	CLUSTAL: Higgins et al. (1992), Thompson et al. (1994)
Endosymbiosis and gene transfer	prim. endosymbiosis / gene transfer: Gray (1989), Harris et al. (2003) ...
Artificial Neural Networks (ANN)	splice site prediction: Hebsgaard et al. (1996)
Targeting signals via ANN	prediction of targeting signals: Nielsen et al. (1997)
Targeting signal prediction	Prediction of subcellular localization: Emanuelsson et al. (2000), Höglund et al. (2005)

[Stefan.rensing@biologie.uni-freiburg.de](mailto:Stefan.rensing@biologie.uni-freiburg.de), <http://plantco.de>

